

# DHANASHREE ENGINEERS

ENGINEERING EXCELLENCE  
FOR A GLOBAL TOMORROW

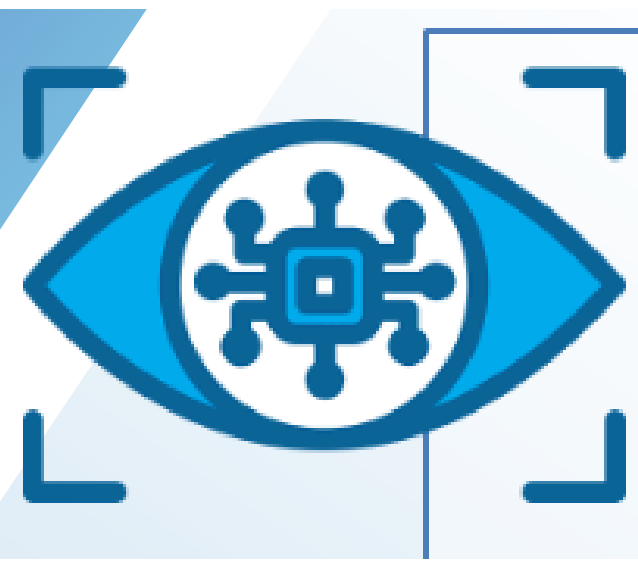


# ABOUT THE COMPANY

## Engineering Excellence for a Global Tomorrow

- **Dhanashree Engineers** is a Indian manufacturer of **precision machined and epoxy cast components**, delivering **high-quality engineering solutions** to global clients.
- With **decades of expertise** in turning, milling, and molding, we specialize in **customized machined and epoxy cast components** trusted by leading **electrical and mechanical OEMs**.
- Our facility is equipped with advanced **CNC & VMC machinery, epoxy molding systems**, and **in-house testing capabilities**, including **High Voltage (HV) testing up to 100 kV**.
- Driven by **quality, innovation, and reliability**, we provide **design support, production flexibility**, and strict adherence to **international quality standards**, ensuring precision solutions for a **global tomorrow**.





**Vision:** To be a globally recognized engineering partner delivering excellence in precision machining and molding solutions.



**Mission:** To continuously innovate, adopt advanced technologies, and ensure customer satisfaction through precision, performance, and partnership.



**Values:** Integrity • Innovation • Quality • Commitment • Sustainability

# CORE CAPABILITIES

Our expertise spans across precision machining and epoxy molding solutions, serving mechanical and electrical industries.

- CNC Turning and Milling – complex geometries and tight tolerances
- Vertical Machining Centers (VMC) – multi-axis precision machining
- Epoxy Molding – encapsulated electrical assemblies and insulators
- In-house Tooling and Fixture Development
- Sub-assembly Manufacturing and Integration

# INFRASTRUCTURE & TESTING FACILITIES

Our manufacturing facility is equipped to deliver world-class machining accuracy and production consistency.



**VMC**



**CNC**

CNC TURNING CENTERS (LMW, ACE DESIGNERS)

VERTICAL MACHINING CENTERS (VMC)

CONVENTIONAL LATHES, DRILLING & GRINDING MACHINES

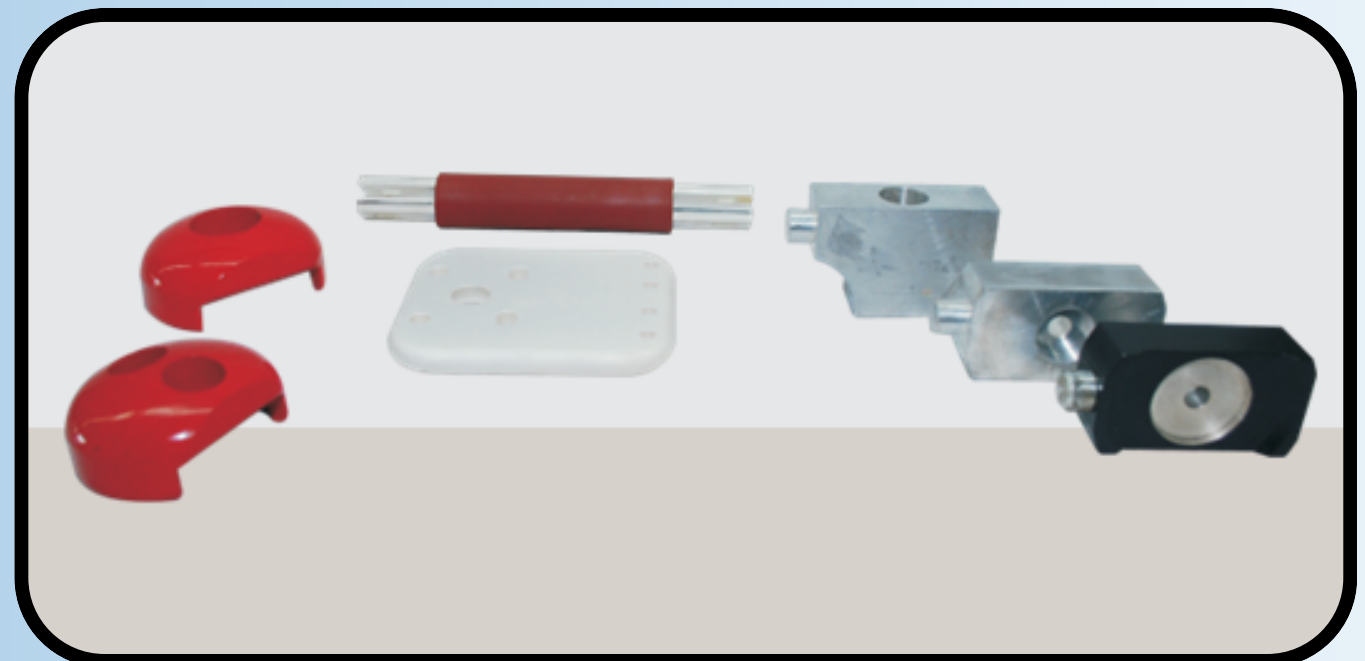
OPTIONAL MECHANICAL AND ELECTRICAL TESTING FACILITIES PER CUSTOMER SPECS

IN-HOUSE HIGH VOLTAGE TESTING FACILITY UP TO 100 KV

# OUR PRODUCTS



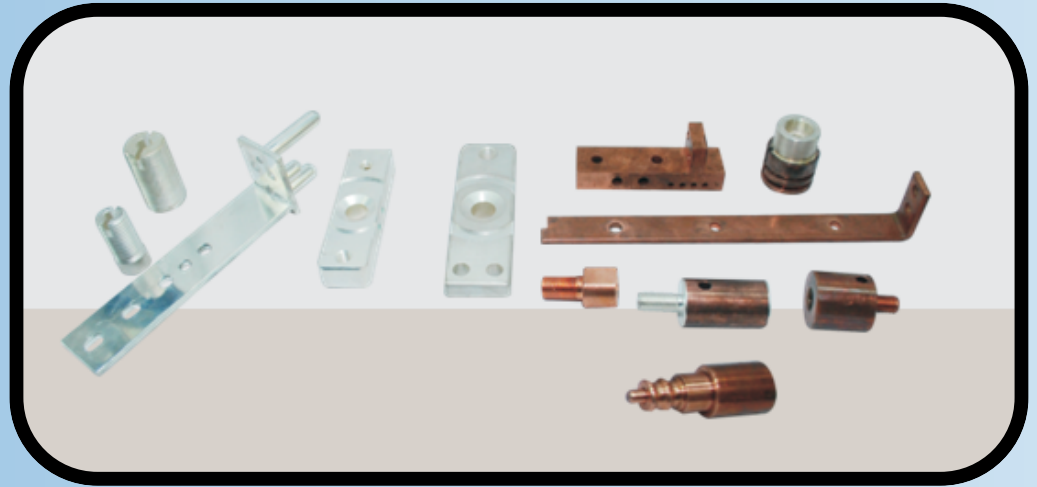
**BRASS INSERTS & COMPONENTS**



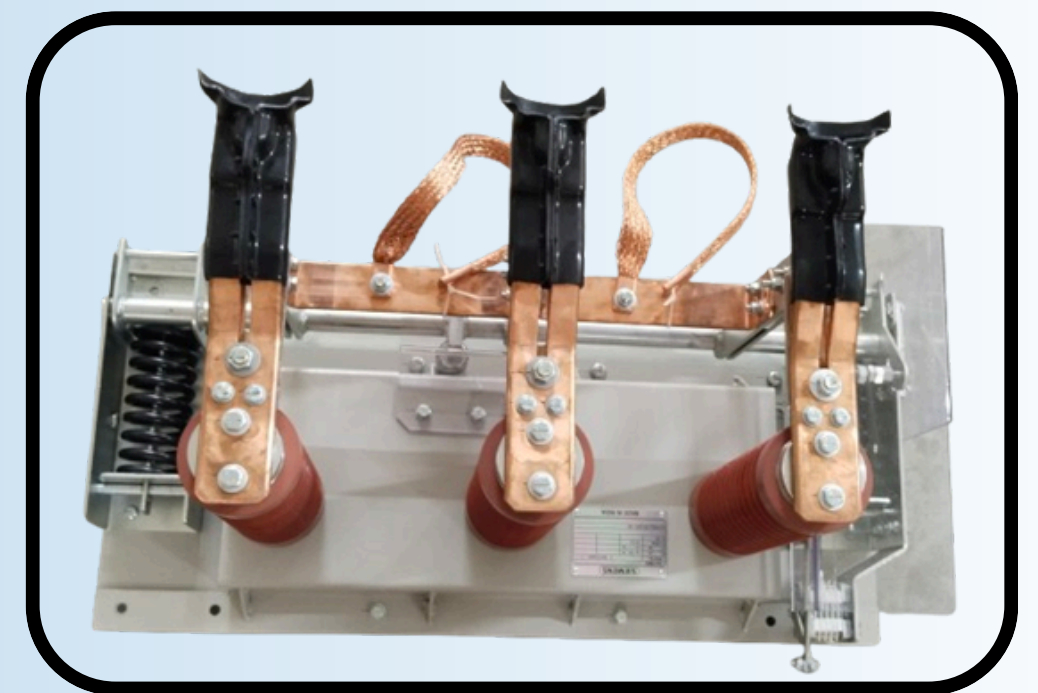
**ALUMINIUM COMPONENTS WITH POWDER COATING, SILVER PLATING & HEAT SHRINKABLE SLEEVES**



**COPPER CONDUCTORS**



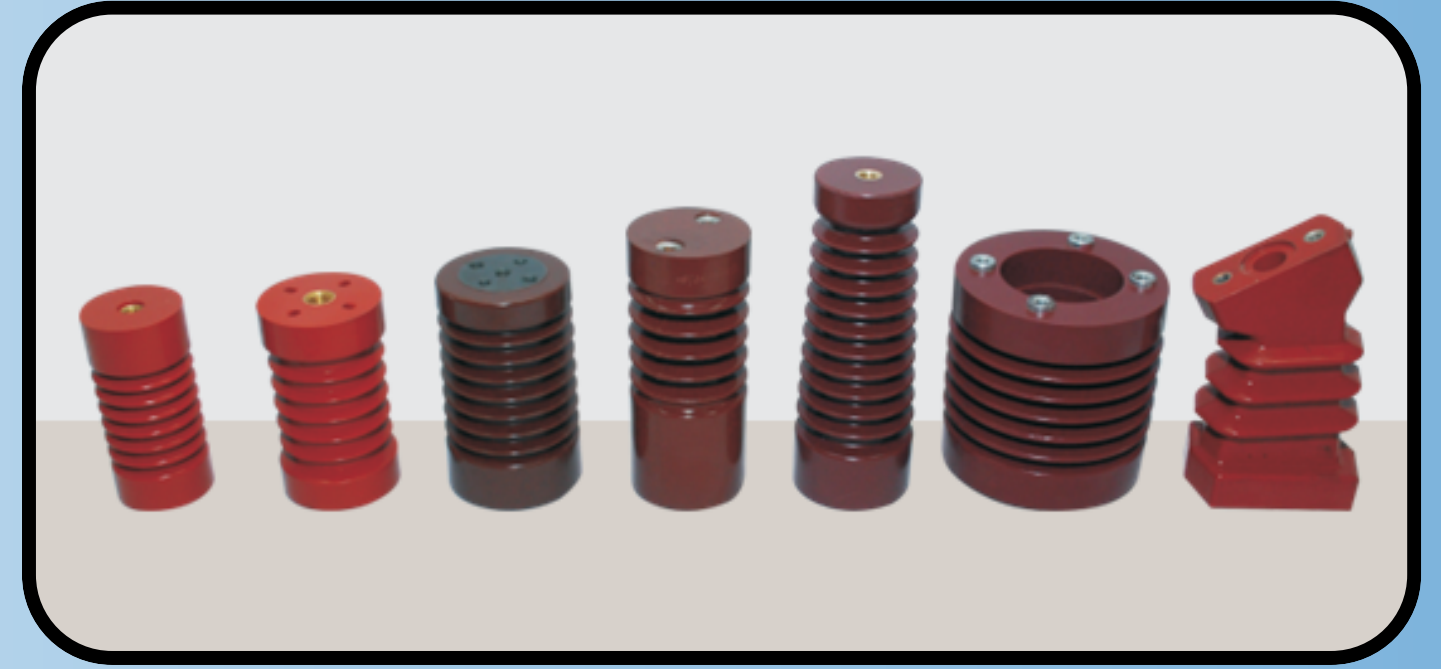
**COPPER CONDUCTORS WITH SILVER AND TIN PLATING**



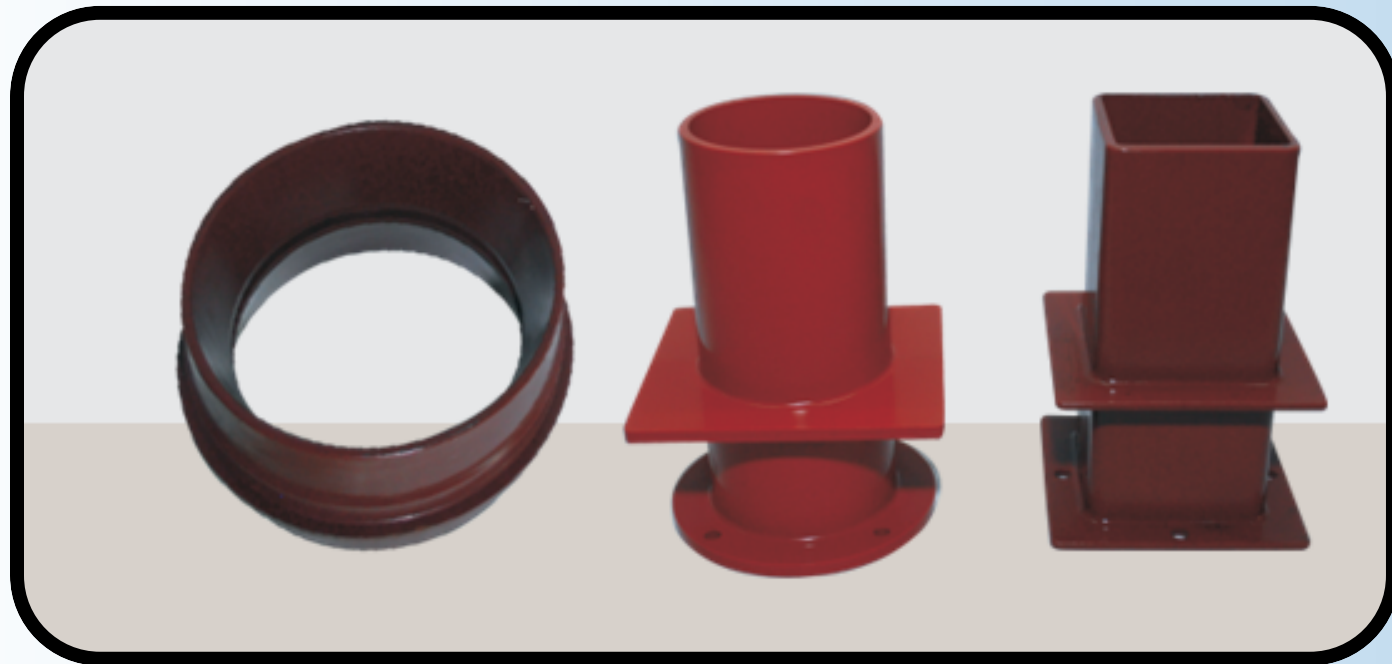
**EARTHING SWITCH**



**EPOXY CASTED DB CONNECTION BAR  
FOR 12KV (1250A, 1600A, 2000A)**



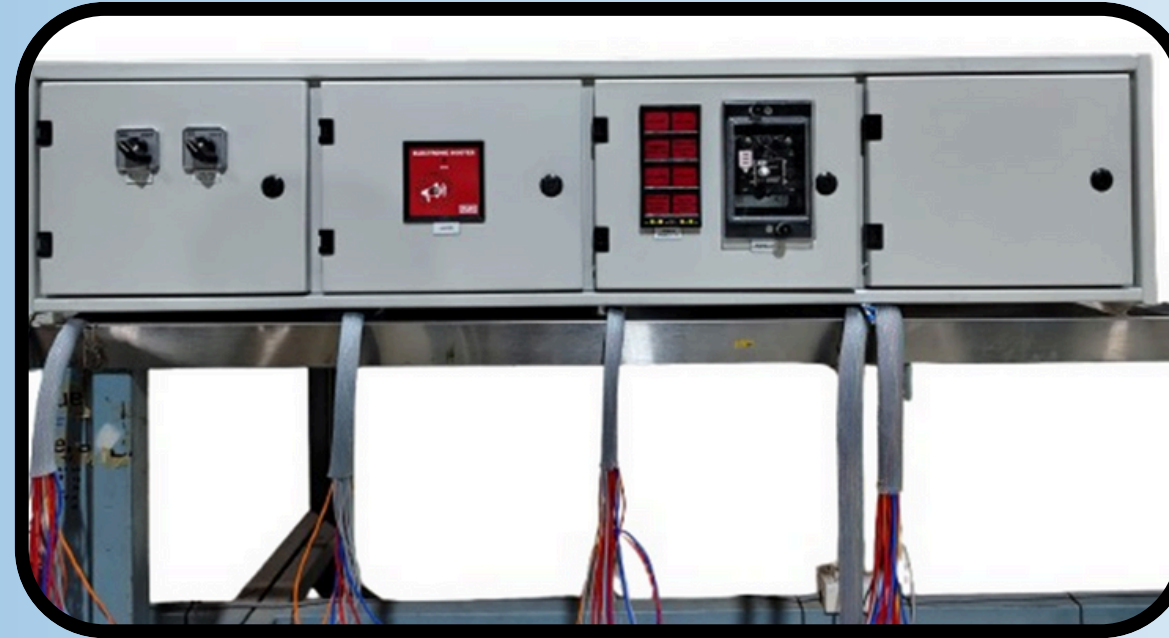
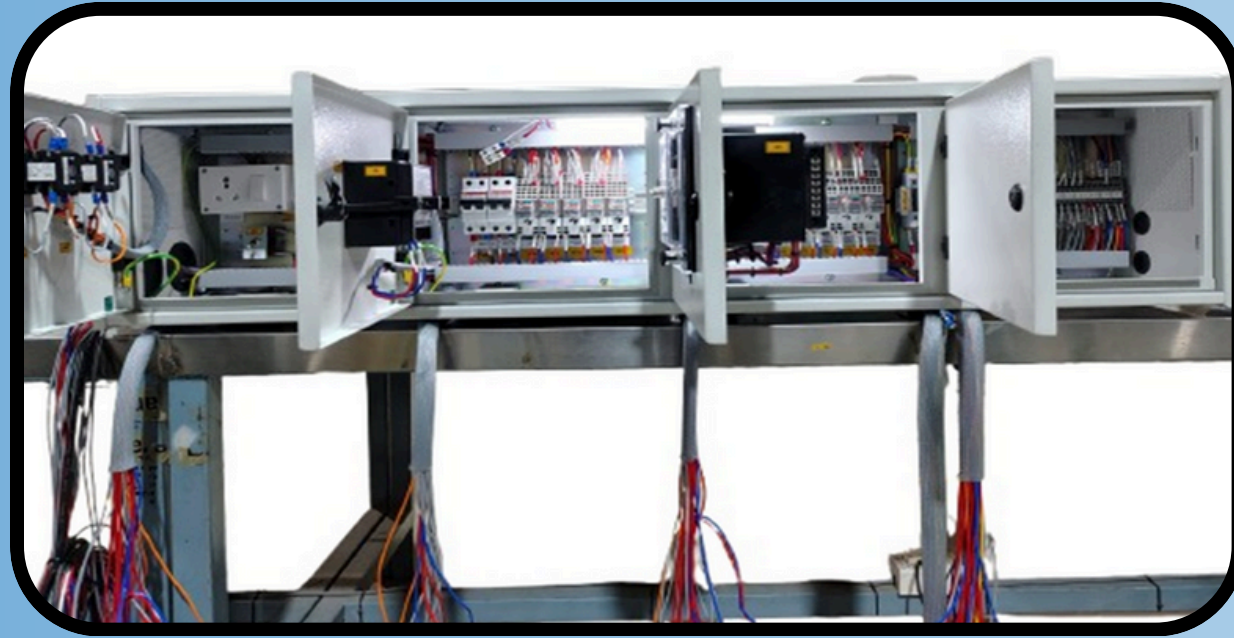
**INSULATORS FROM  
7.2KV TO 33KV**



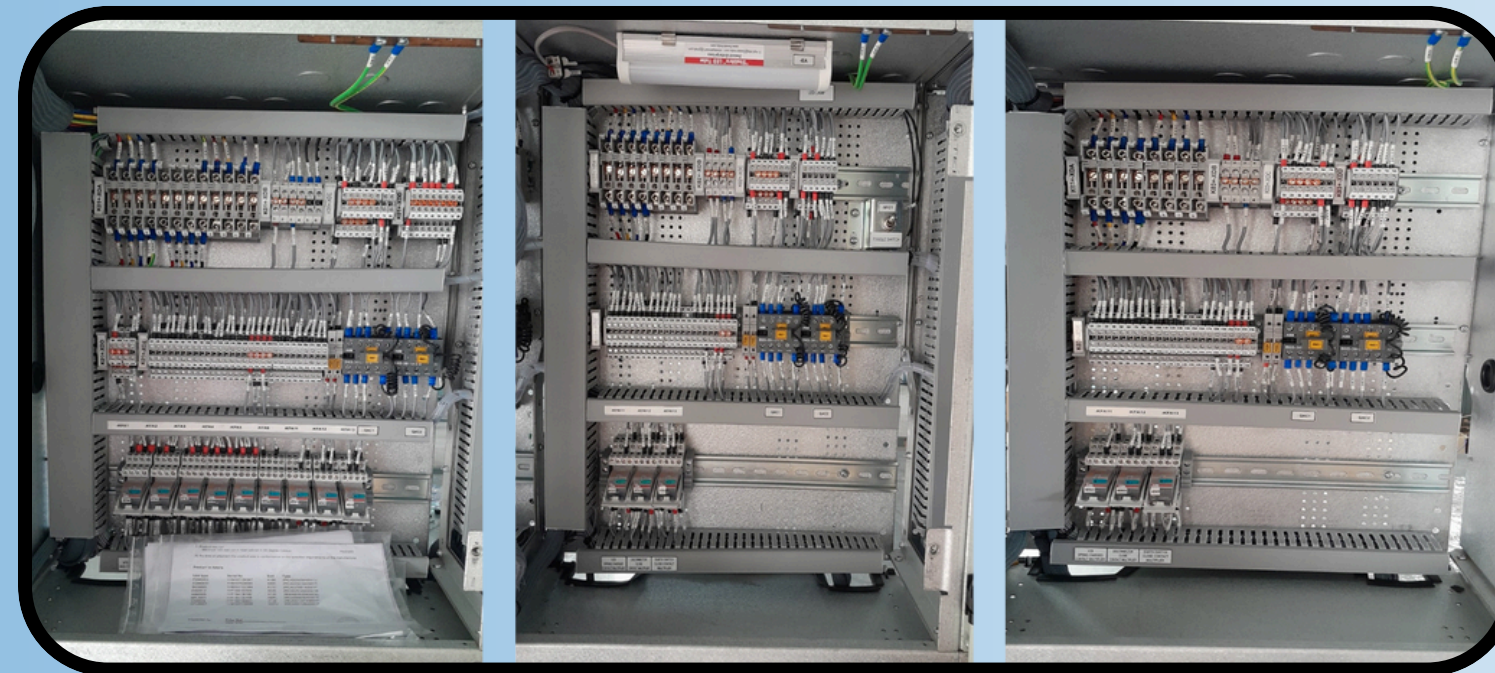
**INTER PANEL BUSHING &  
SPOUT BUSHING**



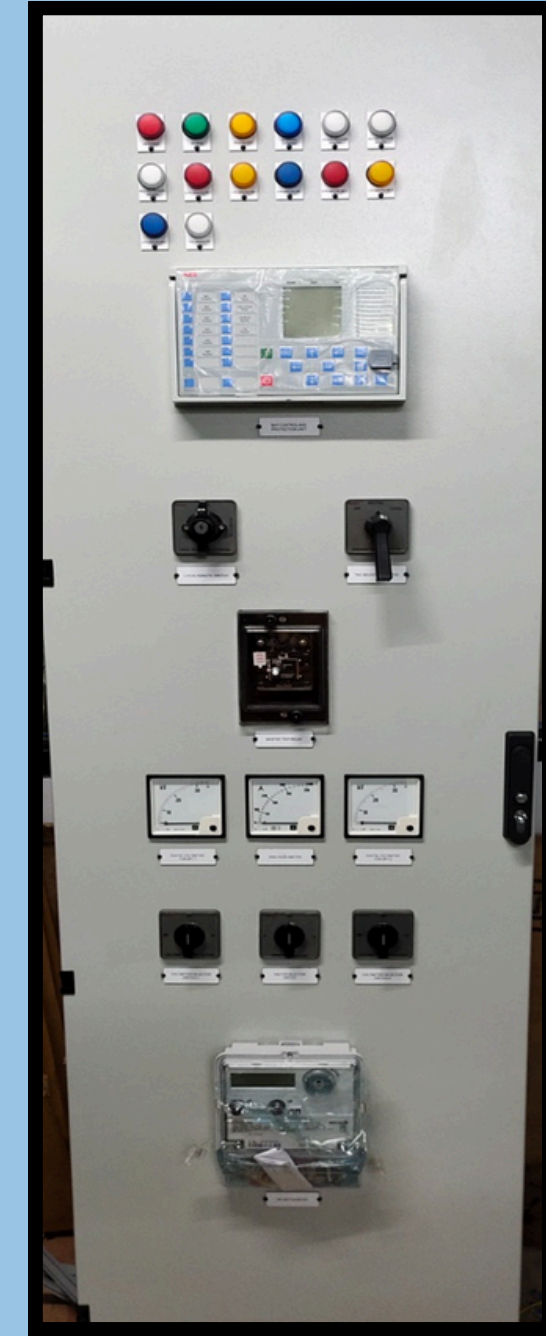
**ASSEMBLED BEARINGS**



**INDOOR LV PANELS - 11KV / 22KV**



**OUTDOOR LV PANELS - 33KV**



**GIS LVC PANELS - ZX2. ZX0.2. ZX0**

# SWITCHGEAR ASSEMBLIES & ELECTRICAL SUBSYSTEMS

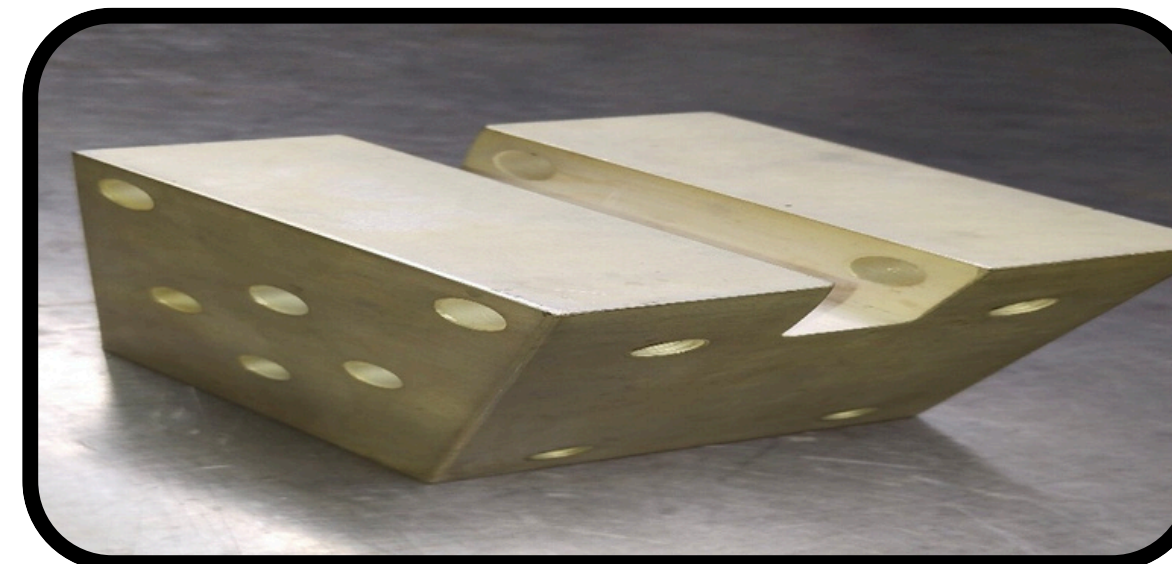
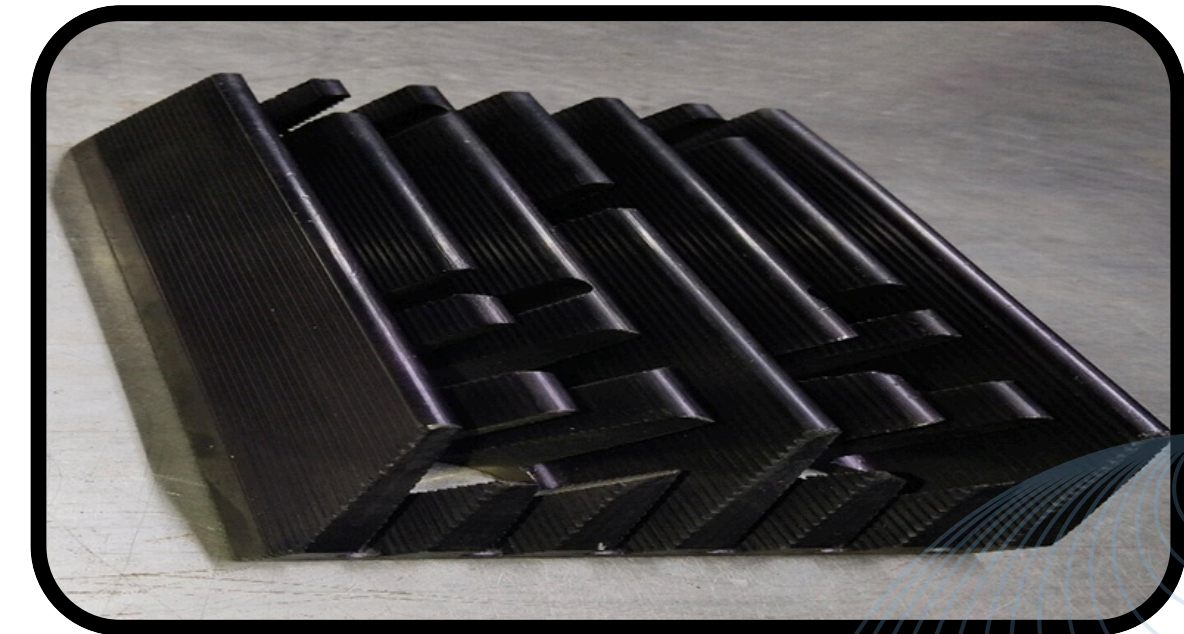
We at Dhanashree Engineers manufacture precision-engineered switchgear assemblies and electrical subsystems, offering integrated machining and epoxy molding for complete OEM solutions.

- Expertise in precision components, encapsulated assemblies, and busbar systems.
- Proficiency with copper/aluminium components, insulators, and connectors
- End-to-end machining, molding, and finishing.
- In-house high-voltage testing up to 100 kV.



**SPRING CHARGING  
HANDLE**

**ALUMINIUM HEAT  
SINK**



**COPPER  
CONDUCTOR  
BLOCKS WITH  
SILVER PLATING**

# QUALITY SYSTEMS & CERTIFICATIONS

We are **ISO 9001:2015** certified and committed to continuous improvement and process reliability.

- ISO 9001:2015 Certified Quality Management System
- 100% In-process and Final Inspection
- Precision Measuring Instruments: Verniers, Micrometers, Bore Gauges, Surface Testers
- Traceable Calibration and Documentation
- Dedicated Quality Assurance Team



# CLIENTELE



# GLOBAL OUTLOOK

We at Dhanashree Engineers aim to expand our global presence through strategic partnerships and export-driven initiatives.

EXPORT-READY PACKAGING AND DOCUMENTATION

END-TO-END ENGINEERING SUPPORT

SUSTAINABILITY AND INNOVATION FOCUS

CUSTOMER SATISFACTION AND LONG-TERM GROWTH



**THANK YOU**

